

SBP

- Palletised tank for storing and internal handling.
- Shaped base with fork-slot for lift truck and manual transpallet.
- Bottom with deep drawn shaped discharge to grant full product discharge.

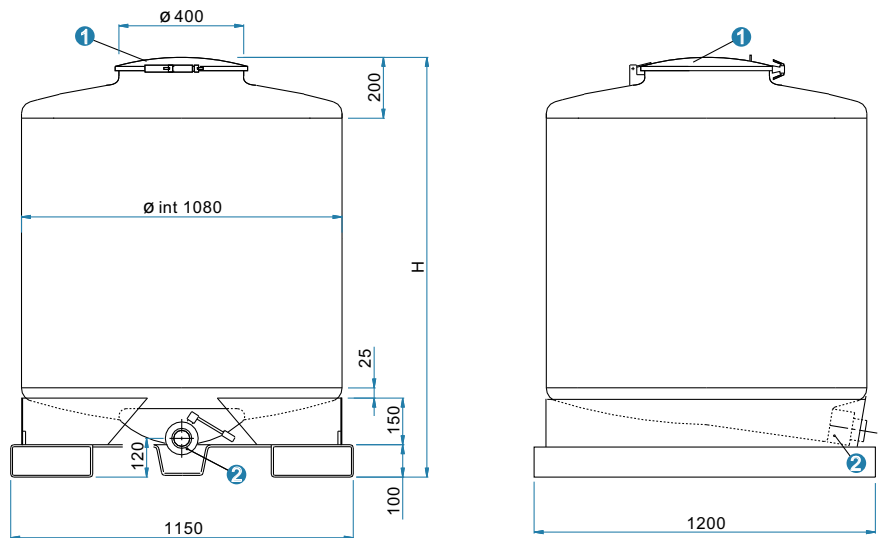
TECHNICAL FEATURES

Stainless steel cold-rolled AISI 304 tank (AISI 316 upon request), 2b finish. Cold-forged bottom covers with optimised shape, minimum thickness: 2 mm. Robotized TIG welding process. Pickled and passivated seams.

DIN 45706 bath-galvanized stainless steel palletised base (painted upon request). Stainless steel ring welded to the tank and screwed to the base.

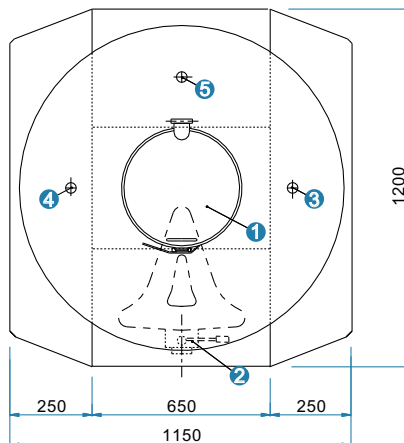
Max hydraulic test pressure:
2.0 bar (200 Kpa).

Max working pressure:
0.5 bar (50 Kpa).



ACCESSORIES UPON REQUEST

- Different types of rapid fittings or nipples.
- Stirrers, washing systems, etc.
- Level gauges.
- Insulation and heating plates.
- Dimensional changes and customised equipment to meet all needs.



EQUIPMENT

- 1 400 mm. diameter manhole
 - Lid with clamp closure (standard)
 - Lid with six swing bolts (upon request)
- 2 Ball or butterfly outlet, max diam. DN 80 (3")
- 3 1" diam. threaded connection for safety valve:
 - Pressure relief valve (max press. 0.5 bar)
 - Double action (+ 0.5 bar / - 0.02 bar)
- 4 2" threaded connection
- 5 Additional connection, max 3" diam. (upon request)

MODEL	capacity liters	tare weight Kg	base thickness mm	height H mm
SBP 500	530	120	1.8	880
SBP 750	735	135	1.8	1110
SBP 1000	997	150	1.8	1390
SBP 1100	1080	155	1.8	1480
SBP 1250	1310	170	2.0	1730
SBP 1500	1540	185	2.0	1985