



MTFC

- Storage tank with stainless steel supporting vertical legs.
- Conical bottom and wide dimensions axial outlet.
- Suitable for very viscous products.

TECHNICAL FEATURES

Stainless steel cold-rolled AISI 304 tank (AISI 316 upon request), 2b finish. Cold-forged bottom covers with optimised shape, minimum thickness: 2 mm. Robotized TIG welding process. Pickled and passivated seams.

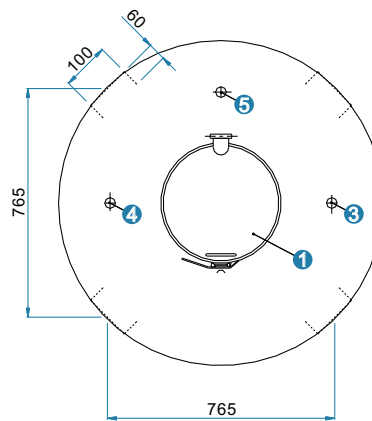
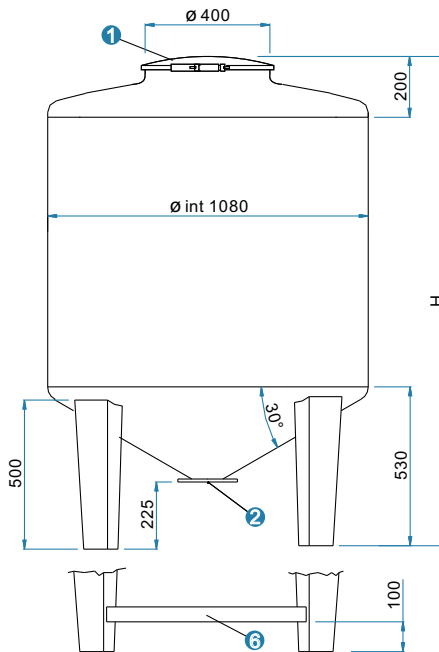
AISI 304 stainless steel **supporting legs**. Upon request with base bars for handling with lifting truck and manual transpallet.

Max hydraulic test pressure:
2.0 bar (200 Kpa).

Max working pressure:
0.5 bar (50 Kpa).

ACCESSORIES UPON REQUEST

- Different types of rapid fittings or nipples.
- Stirrers, washing systems, etc.
- Level gauges.
- Insulation and heating plates.
- Dimensional changes and customised equipment to meet all needs.



EQUIPMENT

- 1 400 mm. diameter manhole
 - Lid with clamp closure (standard)
 - Lid with six swing bolts (upon request)
- 2 Ball or butterfly outlet, max diam. DN 100 (4")
- 3 1" diam. threaded connection for safety valve:
 - Pressure relief valve (max press. 0.5 bar)
 - Double action (+ 0.5 bar / - 0.02 bar)
- 4 2" threaded connection
- 5 Additional connection, max 3" diam. (upon request)
- 6 Bar for handling with lifting truck (upon request)

MODEL	capacity liters	tare weight Kg	base thickness mm	height H mm
MTFC 500	580	90	1.8	1130
MTFC 750	790	105	1.8	1350
MTFC 1000	1045	120	1.8	1630
MTFC 1100	1130	125	1.8	1730
MTFC 1250	1360	140	2.0	1980
MTFC 1500	1590	155	2.0	2230
MTFC 2000	2050	200	2.0	2730