

CPC

- Rectangular section tank with frustum-conical bottom and axial outlet of wide dimensions.
- Suitable for transport and storing of high viscous products or powders and granulates.
- **With UN/ADR/RID approval for the transportation of dangerous products.**

TECHNICAL FEATURES

Stainless steel cold-rolled AISI 304 tank (AISI 316 upon request), 2b finish. Cold-forged bottom covers with optimised shape, minimum thickness: 2 mm. Robotized TIG welding process. Pickled and passivated seams.

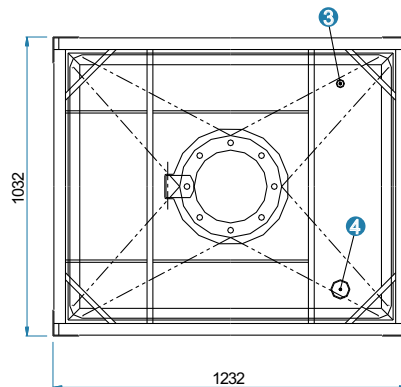
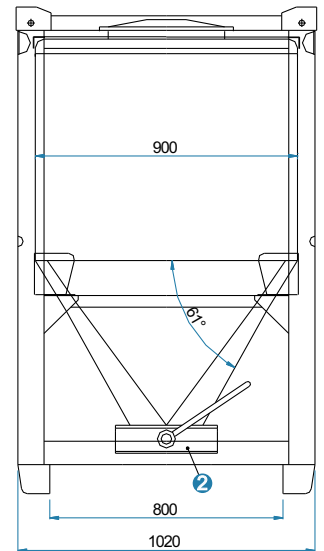
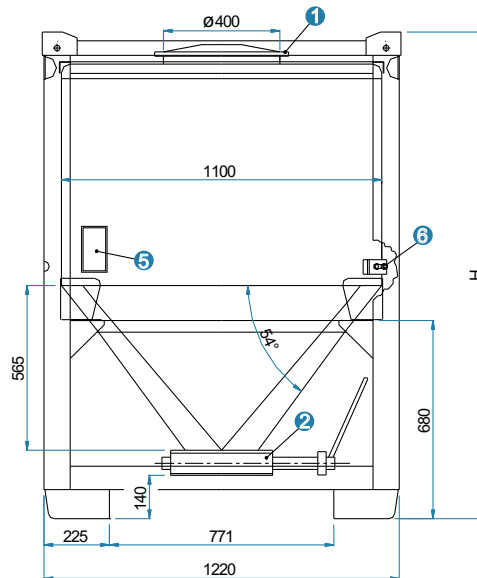
Hot dip galvanised steel DIN 45706 **protection frame** with 2 mm thickness. Tank chamber with anti-vibration rubber pads. Palletised base with fork-slot for lift truck and hand pallet-trucks.

Stacking (UN/ADR/RID standards):
Maximum 3 full superimposed containers.

Transportable products (UN/ADR/RID standards):
- Dangerous products packaging classes I, II and III (UN 11 A/X).
- Max admissible specific weight: **1.2 Kg/dm³**.

ACCESSORIES UPON REQUEST

- Different types of rapid fittings or nipples.
- For the models, without approval, it is possible to make dimensional changes and customised equipment to meet all needs.



EQUIPMENT

- 400 mm. diameter manhole
 - Lid with clamp closure (standard)
 - Lid with six swing bolts (upon request)
- Butterfly valve, max diam. DN 250
- 1" diam. threaded connection for safety valve:
 - Pressure relief valve (max press. 0.5 bar)
 - Double action (+ 0.5 bar / - 0.02 bar)
- 1" threaded connection
- Identification plate
- Rubber pads

MODEL	capacity liters	tare weight Kg	base thickness mm	height H mm	basic size mm
CPC 500	540	210	2.0	1250	1030 X 1230
CPC 750	745	230	2.0	1430	
CPC 1000	995	250	2.0	1670	
CPC 1250	1200	265	2.0	1830	